

led projects

create
advantage
innovate
led's play
work
enjoy
light



FIP OFFICIAL LIGHTING SUPPLIER

CATALOGUE 2026



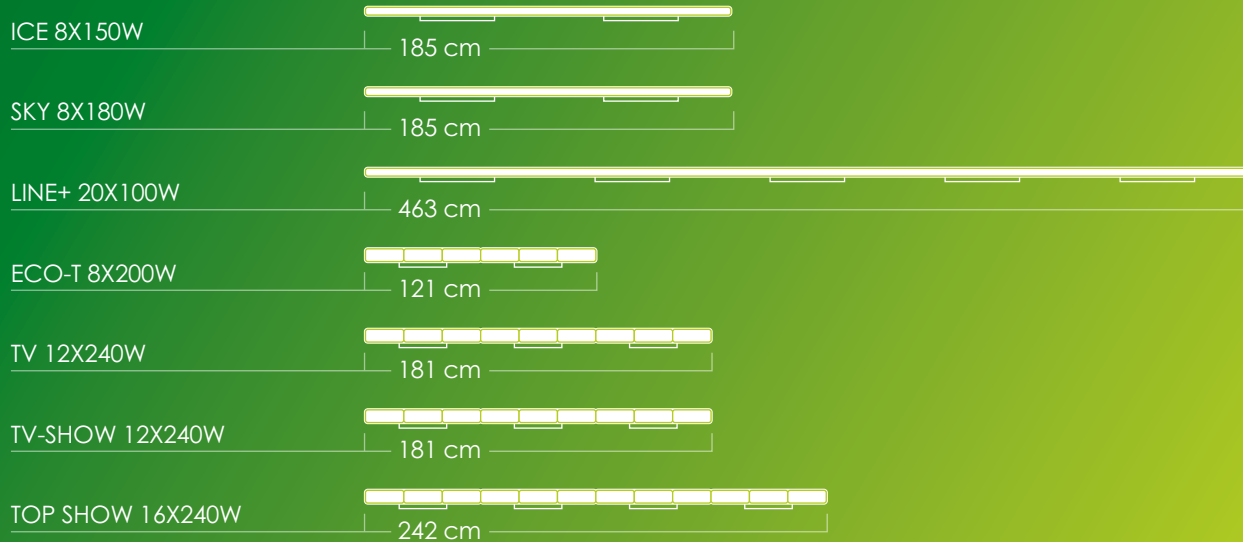


Since 2013, Led Projects has actively accompanied the evolution of professional padel lighting. Today, the company is Official Lighting Supplier of the International Padel Federation (FIP) and its technology is present in the leading international competitions and events, including Premier Padel, Hexagon Cup and Reserve Cup.

Engineered specifically for padel courts, Led Projects lighting systems deliver maximum uniformity, visual comfort and broadcast-ready performance, together with exceptional durability and long service life that significantly reduce maintenance requirements. An approach that turns sustainability into a measurable outcome rather than a claim.

All solutions comply with European standards and hold ETL certification, valid for the United States and Canada. For eight years, the company was also the official lighting of the World Padel Tour (WPT), helping to raise the standards of professional padel lighting.

Comparison Table of Model Length per pole



Model Comparison Table

FEATURES	LED PROJECTS SERIES			PROFESSIONAL SERIES		SHOW SERIES	
	ICE	SKY	LINE+	ECO-T	TV	TV SHOW	TOP SHOW
Lighting class III 200 lx 0.6 Outdoor	●	●	●	●	●	●	●
Lighting class III 300 lx 0.5 Indoor	●	●	●	●	●	●	●
Lighting class II 300 lx 0.7 Outdoor	●	●	●	●	●	●	●
Lighting class II 500 lx 0.7 Indoor			●	●	●	●	●
Lighting class I 500 lx 0.7 Outdoor			●	●	●	●	●
Lighting class I 750 lx 0.7 Indoor					●	●	●
TV broadcasting 1,000 lx (Spanish Standard NIDE1:2021)							●

* Lighting classes according to UNE 147201:2024 and UNE-EN 12193 standards.

* All models offered in the catalogue are ETL certified.



The models shown in this catalogue are ETL (*Electrical Testing Laboratories*) certified and comply with specific international safety and performance standards.

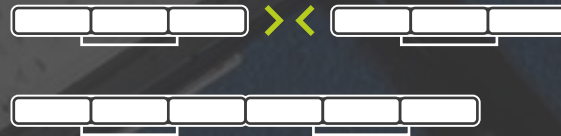
Original and exclusive design of linear and linkable projectors.

More than **7,500 illuminated padel courts** worldwide since 2013.

Optics designed exclusively for padel courts.



Exclusive Linear Padel Lighting Design with a linkable module technology making the space between the modules always equidistant.



Installation adapted to avoid glare and pollution in the upper hemisphere.

Compliance with the UNE-EN 12193 standard for the lighting of sports facilities and the UNE 147201, Padel courts. Safety requirements and test methods and inspection.

Up to 5 years warranty.

ICE 8x150W

Join Led Projects



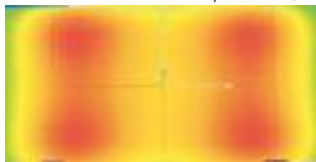
LED PROJECTS SERIES
ICE 8x150W

Led Projects
linear lighting
at your fingertips



* The driver can be modified to one compatible with voltages of 100 and 115V, as is the case in Japan, Anguilla, Belize, British Virgin Islands, Colombia, Cuba, Guam, Haiti, Honduras, Jamaica, Saba, Sint Eustatius (Netherlands), Suriname, Taiwan, Sint Maarten (Netherlands), United States Virgin Islands, Antigua and Barbuda, Barbados, Trinidad and Tobago, El Salvador.

Average illuminance,
 $E_{av} \cdot 334 \text{ lx}$
Uniformity, $u_0 \cdot 0,81$



Led light power: 150 W
Total power: 1,200 W/court



Voltage range (120-240) V
Valid worldwide* (50-60 Hz)



Colour temperature: 5,000K
(cool white)



Anti-flicker driver,
suitable for slow motion



5 years warranty



185 cm

Lighting class
(UNE-EN 12193:2020)

Outdoor Indoor

I. Highest level of competition:
national and international

II. Regional competitions
and high-level training



III. Local competitions, training,
school and recreational use



Led lights
pole



Led lights
court



Resistance to water / dust
IP67



Impact protection
IK10 - 20 joules (DIN EN 62262)



Surge protection (SPD)
4kV in-built



Asymmetric optics designed
exclusively for padel courts



Linear design with the
linkable module technology



SKY 8x180W

Designed for
black out



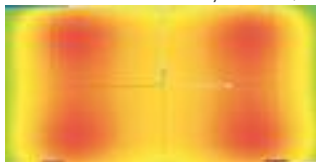
**LED PROJECTS SERIES
SKY 8x180W**

Control your club's
lighting



* The driver can be modified to one compatible with voltages of 100 and 115V, as is the case in Japan, Anguilla, Belize, British Virgin Islands, Colombia, Cuba, Guam, Haiti, Honduras, Jamaica, Saba, Sint Eustatius (Netherlands), Suriname, Taiwan, Sint Maarten (Netherlands), United States Virgin Islands, Antigua and Barbuda, Barbados, Trinidad and Tobago, El Salvador.

Average illuminance,
 E_{av} · **463 lx**
Uniformity, u_0 · **0,82**



Led light power: 180 W
Total power: 1,440 W/court



Voltage range (120-240) V
Valid worldwide* (50-60 Hz)



Colour temperature: 5,000K
(cool white)



Anti-flicker driver,
suitable for slow motion



Dimmable driver 1-10 V



5 years warranty



185 cm

**Lighting class
(UNE-EN 12193:2020)**

Outdoor Indoor

I. Highest level of competition:
national and international

II. Regional competitions
and high-level training



III. Local competitions, training,
school and recreational use



Led lights
pole



Led lights
court



Resistance to water / dust
IP67



Impact protection
IK10 - 20 joules (DIN EN 62262)



Surge protection (SPD)
4kV in-built



Asymmetric optics designed
exclusively for padel courts



Linear design with the
linkable module technology



LINE + 20x100W

Minimalism, beauty,
Led Projects





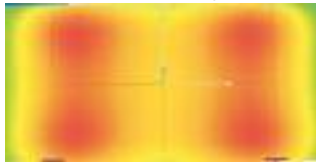
**LED PROJECTS SERIES
LINE+ 20x100W**

The lighting in which
linearity, simplicity
and functionality
merge



* The driver can be modified to one compatible with voltages of 100 and 115V, as is the case in Japan, Anguilla, Belize, British Virgin Islands, Colombia, Cuba, Guam, Haiti, Honduras, Jamaica, Saba, Sint Eustatius (Netherlands), Suriname, Taiwan, Sint Maarten (Netherlands), United States Virgin Islands, Antigua and Barbuda, Barbados, Trinidad and Tobago, El Salvador.

Average illuminance,
E_{av} · **692 lx**
Uniformity, u₀ · **0,73**



Led light power: 100 W Total
Total power: 2,000 W/court



Voltage range (120-240) V
Valid worldwide* (50-60 Hz)



Colour temperature: 5,000K
(cool white)



Anti-flicker driver,
suitable for slow motion



Dimmable driver 1-10 V
(optional)



5 years warranty



463 cm

**Lighting class
(UNE-EN 12193:2020)**

	Outdoor	Indoor
I. Highest level of competition: national and international	●	
II. Regional competitions and high-level training	●	●
III. Local competitions, training, school and recreational use	●	●



Led lights
pole



Led lights
court



Resistance to water / dust
IP67



Impact protection
IK10 - 20 joules (DIN EN 62262)



Surge protection (SPD)
4kV in-built



Asymmetric optics designed
exclusively for padel courts



Linear design with the
linkable module technology



Suspension kit
(optional)



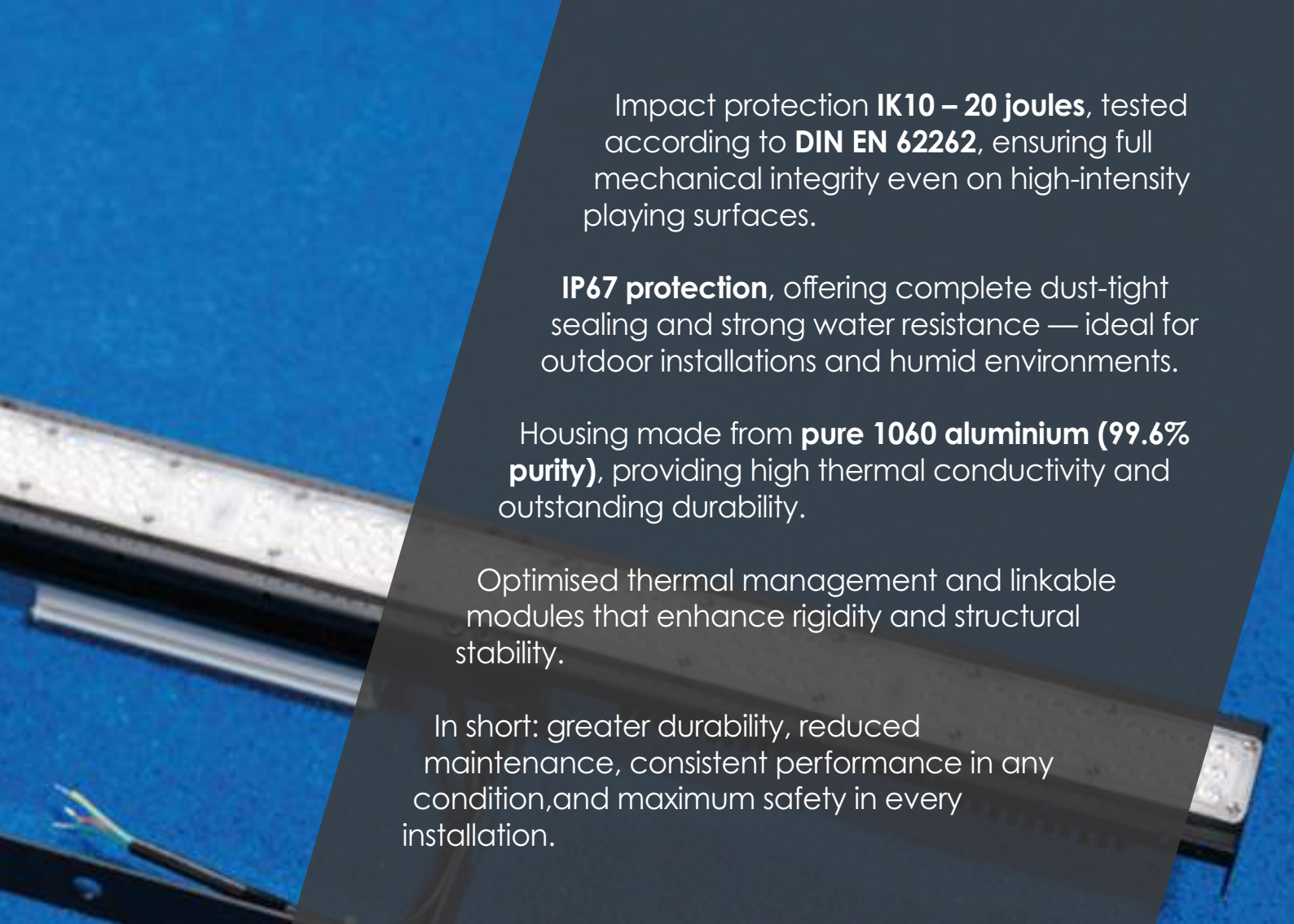
The models featured in this catalogue are equipped with high-resistance housings and certified protection systems that ensure durability, safety and long-term stability.

Mechanical and environmental protection designed for high-demand sports environments.

Housings manufactured from **pure 1060 aluminium (99.6% purity)**, providing excellent strength and outstanding thermal performance.

A design engineered to withstand impacts, intensive use and harsh weather conditions.





Impact protection **IK10 – 20 joules**, tested according to **DIN EN 62262**, ensuring full mechanical integrity even on high-intensity playing surfaces.

IP67 protection, offering complete dust-tight sealing and strong water resistance — ideal for outdoor installations and humid environments.

Housing made from **pure 1060 aluminium (99.6% purity)**, providing high thermal conductivity and outstanding durability.

Optimised thermal management and linkable modules that enhance rigidity and structural stability.

In short: greater durability, reduced maintenance, consistent performance in any condition, and maximum safety in every installation.

ECO-T 8x200W

Our top seller court!



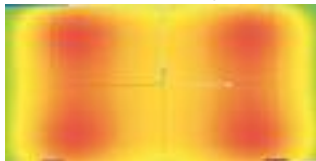


PROFESSIONAL SERIES
ECO-T 8x200W

Make the leap to professional lighting



Average illuminance,
 E_{av} · **513 lx**
Uniformity, u_0 · **0,81**



Led light power: 200 W
Total power: 1,600 W/court



Voltage range (100-240) V
Valid worldwide (50-60 Hz)



Colour temperature: 5,000K
(cool white)



Anti-flicker driver,
suitable for slow motion



Dimmable driver 1-10 V



5 years warranty
1st year full warranty



121 cm

Lighting class
(UNE-EN 12193:2020)

	Outdoor	Indoor
I. Highest level of competition: national and international	●	
II. Regional competitions and high-level training	●	●
III. Local competitions, training, school and recreational use	●	●



Led lights
pole



Led lights
court



Resistance to water / dust
IP67



Impact protection
IK10 - 20 joules (DIN EN 62262)



Surge protection (SPD)
4kV in-built



Asymmetric optics designed
exclusively for padel courts



Linear design with the
linkable module technology



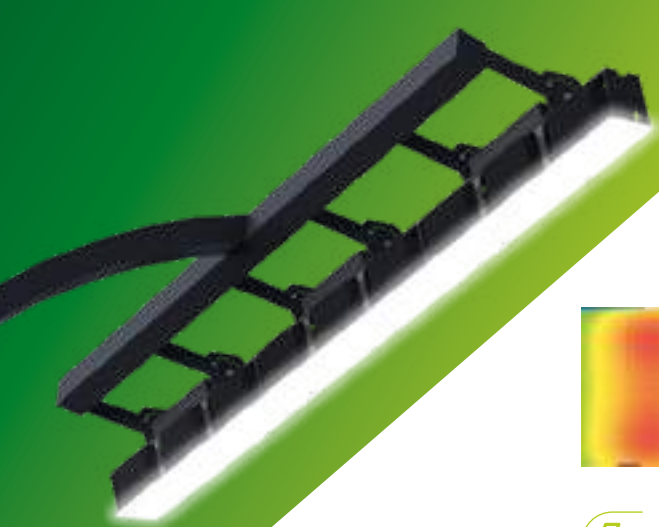
Anti-pollution visors
(optional)



TV 12x240W

Visual accuracy
for broadcasting



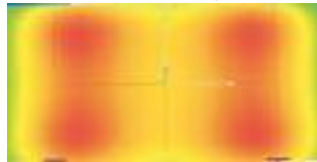


PROFESSIONAL SERIES
TV 12x240W

Your club's
centre court



Average illuminance,
 E_{av} · **784 lx**
Uniformity, u_0 · **0,80**



Led light power: 240 W
Total power: 2,880 W/court



Voltage range (100-240) V
Valid worldwide (50-60 Hz)



Colour temperature: 5,000K
(cool white)



Anti-flicker driver,
suitable for slow motion



DALI Dimmable driver



5 years warranty
The first 2 years full warranty

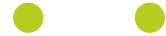


181 cm

Lighting class
(UNE-EN 12193:2020)

I. Highest level of competition:
national and international

Outdoor Indoor



II. Regional competitions
and high-level training



III. Local competitions, training,
school and recreational use



Led lights
pole



Led lights
court



Resistance to water / dust
IP67



Impact protection
IK10 - 20 joules (DIN EN 62262)



Surge protection (SPD)
4kV in-built



Asymmetric optics designed
exclusively for padel courts



Linear design with the
linkable module technology



Anti-pollution visors
(optional)



The luminaires in this catalogue can be optionally fitted with specialised treatments to enhance their resistance in demanding or aggressive environments.




Additional corrosion protection for coastal installations or areas with high humidity and chemical exposure.

Key components in **A4-316 stainless steel** and premium coatings that reinforce the overall durability of the system.

A design engineered to extend service life in harsh and highly demanding environments.





Optional finish with **AkzoNobel Powder** coating, enhancing protection against corrosion and environmental degradation.

Bracket and hardware in **A4-316 stainless steel**, a high-resistance alloy ideal for marine, humid or corrosive environments.

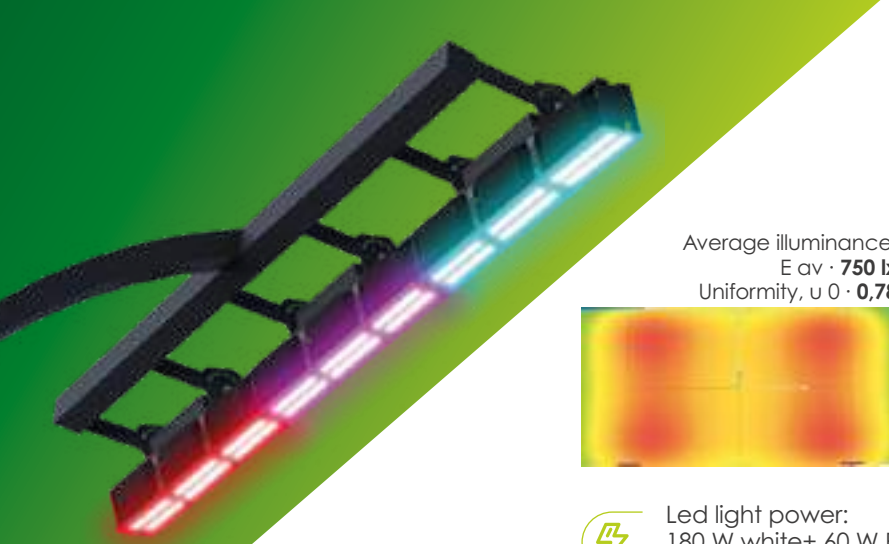
Greater durability in coastal areas, industrial facilities, treatment plants or spaces with high chloride concentration and moisture.

Extended service life, reduced maintenance and strong mechanical stability, even under highly demanding climatic and environmental conditions.

TV SHOW 12x240W

Ready for
the show!



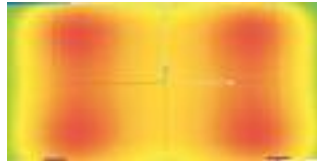


SHOW SERIES
TV SHOW 12x240W

Add a touch of colour and create unforgettable experiences



Average illuminance,
 $E_{av} \cdot 750 \text{ lx}$
Uniformity, $u_0 \cdot 0,78$



Led light power:
180 W white+ 60 W RGB
Total power: 2,880 W/court



Voltage range (100-240) V
Valid worldwide (50-60 Hz)



Colour temperature: 5,000K
(cool white) + RGB



Anti-flicker driver,
suitable for slow motion



RGBW lighting system with
DMX control (digital multiplex)



3 years warranty



181 cm

Lighting class
(UNE-EN 12193:2020)

	Outdoor	Indoor
I. Highest level of competition: national and international	●	●
II. Regional competitions and high-level training	●	●
III. Local competitions, training, school and recreational use	●	●



Led lights
pole



Led lights
court



Resistance to water / dust
IP67



Impact protection
IK10 - 20 joules (DIN EN 62262)



Surge protection (SPD)
4kV in-built



Asymmetric optics designed
exclusively for padel courts



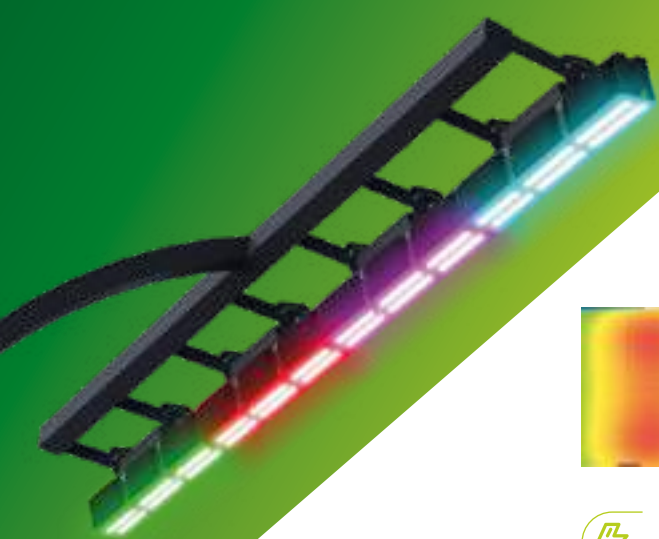
Linear design with the
linkable module technology



TOP SHOW 16x240W

The new language
of sports lighting





SHOW SERIES
TOP SHOW 16x240W

Turn your event
into a visual
spectacle



Average illuminance,
E av · **1,000 lx**
Uniformity, u 0 · **0,78**



Led light power:
180 W white + 60W RGB
Total power: 3,840 W/court



Voltage range (100-240) V
Valid worldwide (50-60 Hz)



Colour temperature: 5,000K
(cool white) + RGB



Anti-flicker driver,
suitable for slow motion



RGBW lighting system with
DMX control (digital multiplex)



3 years warranty



242 cm

Lighting class
(UNE-EN 12193:2020)

TV broadcasting 1,000 lx
(Spanish Standard NIDE1:2021)

Outdoor Indoor



I. Highest level of competition:
national and international



II. Regional competitions
and high-level training



III. Local competitions, training,
school and recreational use



Led lights
pole



Led lights
court



Resistance to water / dust
IP67



Impact protection
IK10 - 20 joules (DIN EN 62262)



Surge protection (SPD)
4kV in-built



Asymmetric optics designed
exclusively for padel courts



Linear design with the
linkable module technology





And... professional lighting was created!

THE 10 COMMANDMENTS OF PADEL LIGHTING

I You shall worship lighting made specifically for padel above all else.

II You shall not place generic lighting on a sacred court.

III You shall sanctify uniformity and the correct lux levels.

IV You shall honor standards UNE-EN 12193 and UNE 147201.

V You shall not kill the player's experience with shadows or glare.

VI You shall not commit impure acts with unverified fixtures.

VII You shall not steal quality to save a few euros.

VIII You shall not bear false witness about lux levels.

IX You shall not allow light pollution or spill into the sky.

X You shall not covet your competitor's innovation... you shall create your own.

Those who live by these commandments don't just install lighting. They create spectacle. Elevate the game. Make a difference.

We set the standard in lighting for the world's top circuits, tournaments and clubs.



FIP OFFICIAL LIGHTING SUPPLIER

Led Light Projects S.L.
 Polígono Neinor, Newton 1,
 Edif. 3 Nave 12,
 28914 Leganés Madrid (Spain)

+34 916 09 49 22
 info@ledprojects.es
 ledprojects.es

